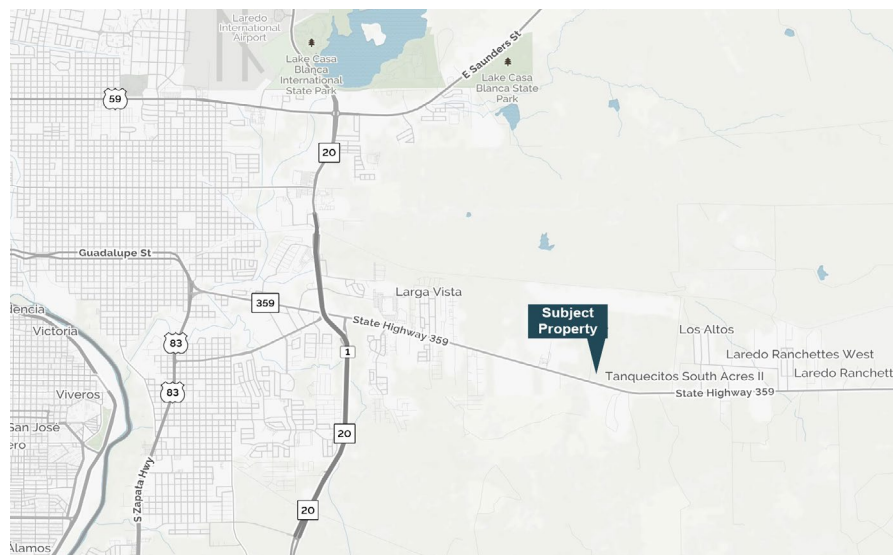




Property Location

4.161 acre lot located in Las Lomas Industrial area. Direct access to Hwy. 359 and Loop 20.



Carlo Molano
Managing Principal
carlom@forumcre.com
M 956.523.9403
O 956.717.9090



110 Wilcox Rd.

LAREDO, TX

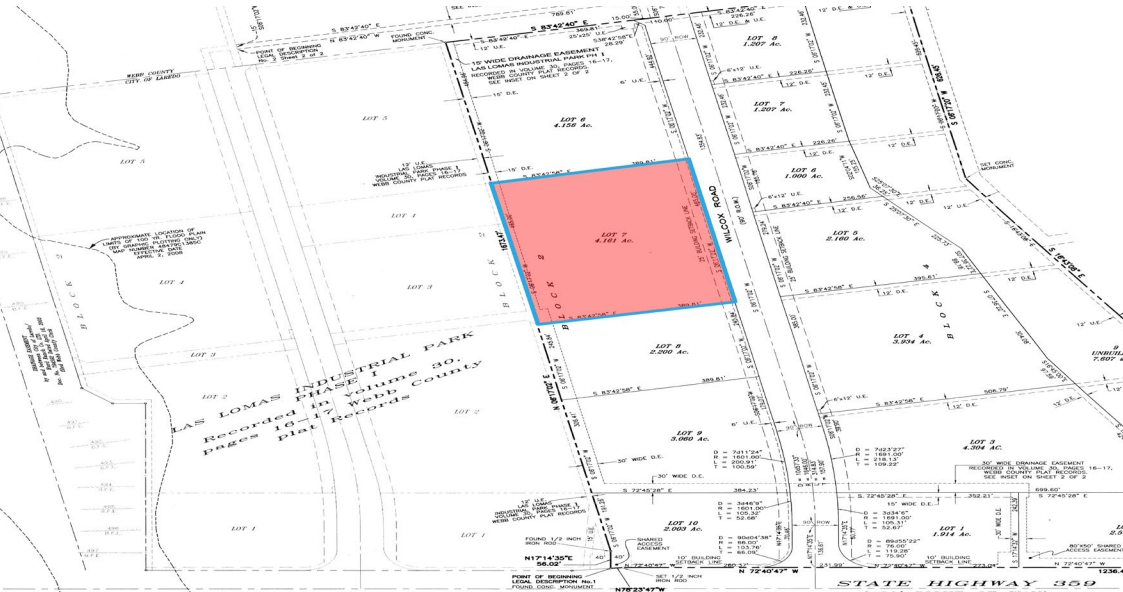
Industrial Land
For Sale

Industrial Park: Las Lomas Industrial Park

Available Lot Size: 4.161 Acres

Zoning: M-1

Site Plan



FORUM 
 COMMERCIAL REAL ESTATE
 BROKERAGE SERVICES
 Disclosure: Broker Owned Property

Carlo Molano
 Managing Principal
 carlom@forumcre.com
 M 956.523.9403
 O 956.717.9090

The information contained herein was obtained from sources believed reliable; Forum CRE, LLC makes no guarantees, warranties or representations as to the completeness or accuracy thereof. The presentation of this property is submitted subject to errors, omissions, change of price or conditions, prior sale or lease, or withdrawal without notice.

